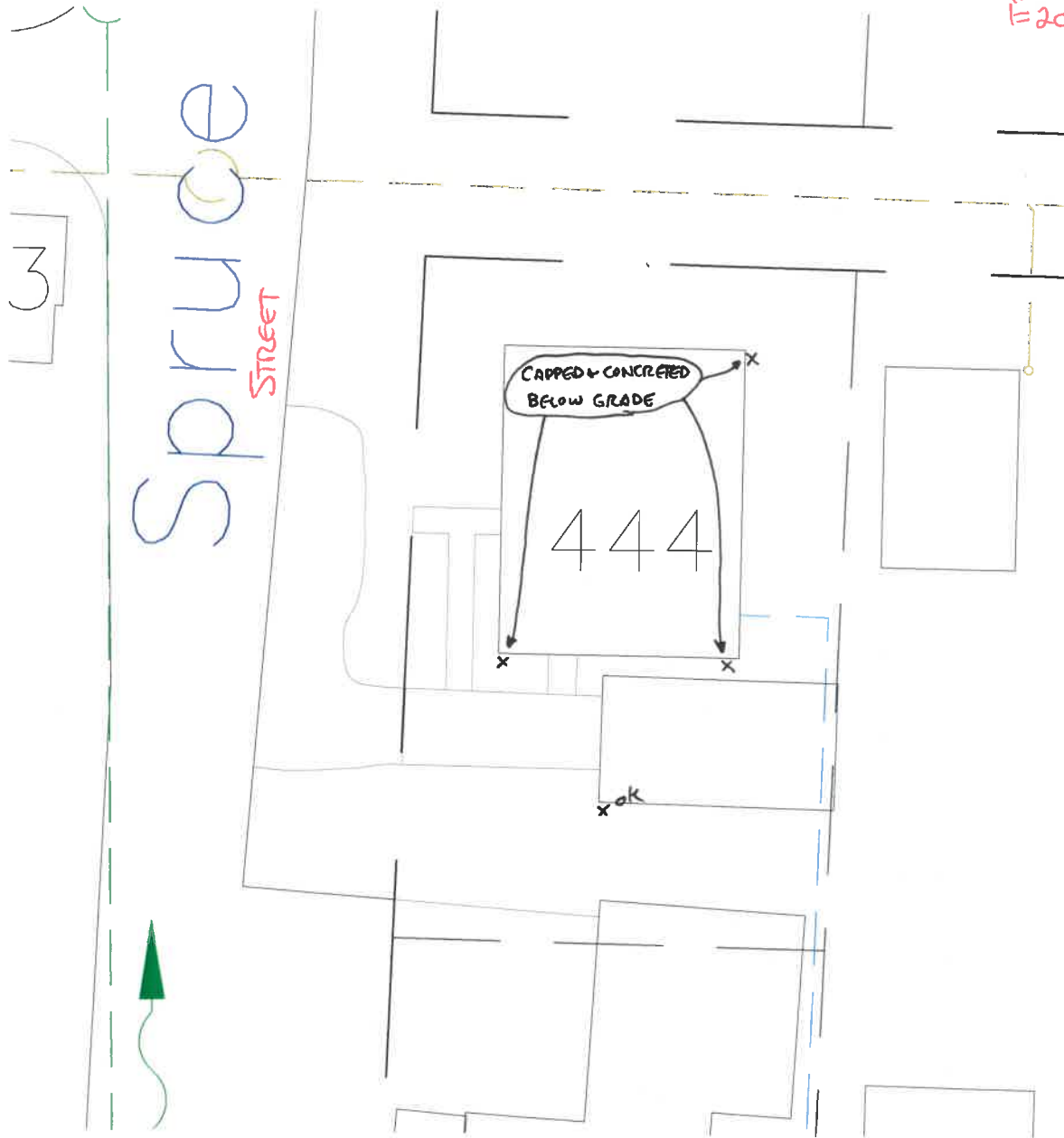


444 SPRUCE STREET  
ILLEGAL DOWNSPOUT INVESTIGATION

2016

N  
1" = 20'



ALL ILLEGAL CONNECTIONS HAVE BEEN CAPPED OR  
PLUGGED AND ARE IN COMPLIANCE AT THIS TIME.

INSPECTED BY: MARK SPIESS